

# Summer Activities

## Whitewater Rafting



Local rafting companies offer everything from an hour long float on the Bow River, a half day on the Kananaskis River or Horseshoe Canyon, to a full day on the mighty Kicking Horse River in beautiful British Columbia. Equipment and transportation provided.

Cost: \$35.00 - \$140.00 per person.

## ATV Tours



Full or half day tours are available taking you away from the main roads and into some of the most beautiful mountain environments. Located on the boundary of Yoho National Park or at Panorama Mountain Village in British Columbia.

Transportation, equipment and lunch provided.  
Cost: \$169.00 - \$245.00 (passengers ½ price)

## Boat Tours



The Devil's Gap Cruise originates from the Lake Minnewanka dock , 15 minutes from Banff (transportation can be arranged). This cruise departs several times daily and travels beneath Mt. Aylmer and Mt. Inglismaldie to Devils Gap. The tour is approximately 1 hour and 30 minutes and is available on a first come first serve basis.  
Cost: Adults \$37.00 Children (5-11) \$18.00

## Fly Fishing



The Eastern slopes of the Rocky Mountains are renowned for their Blue Ribbon Trout waters. Whether is be for Brown, Rainbow or Cut Throat on the famous Bow River a spectacular trip can be designed for you. These fly fishing trips are suitable for all skill levels (beginner to expert. All equipment, lunch and transportation provided,  
Prices: \$275.00 - \$550.00

### Scenic Flights



Enjoy the scenery of the majestic Canadian Rockies or the Columbia Mountains from a different perspective. Your tour includes informative commentary through headsets and an unobstructed window seat for each passenger. Bring your camera and plenty of film.

Prices: \$89.00 - \$209.00 per person

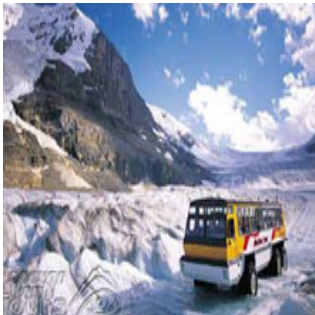
### Horseback Riding



Enjoy western-style trail rides departing from Martin Stables or the Banff Springs Corral with the choice of one, two or three hour rides. Or try a leisurely wagon ride along the Bow River to a Morning Breakfast Cookout or Evening Steak Fry.

Prices: \$34.00 - \$88.00

### Sightseeing Tours



If roaring waterfalls, emerald lakes, alpine meadows and snowcapped peaks are on a list of things to do, than a sightseeing tour is a must. You will be taken to exceptional spots for photos, wildlife viewing and nature walks while learning about the fascinating natural and human history of Canada's National Parks. Full and half day tours available.

Prices: \$49.00 - \$135.00

### Classic Hikes



Hike to classic locations in the Banff Lake Louise area. Share the passion for the mountains with local, enthusiastic guides. Explore trails in Yoho, Larch Valley, Stanley Glacier, Plain of Six Glaciers and Sunshine Meadows. Hikes last from 4- 6 hours. Sturdy footwear is recommended.

Prices: \$25.00 - \$69.00

**For all reservations and further inquiries please see the Concierge.**

## Winter Activities

### DOGSLEDDING



Friendly Alaskan Huskies are eager to pull you on an exciting adventure ranging in times for 2 – 8 hours. Participate at your own confidence level help hook the dogs up to the team, be a passenger, or drive the sled under close supervision of your guide. The Huskies will pull you under the front ranges of the Canadian Rocky Mountains as you sled along the Spray lakes. Snack on gourmet beef jerky, smoked salmon, cheese and dried fruit before returning home. Prices range from \$110.00 - \$450.00 per person.

### SLEIGH RIDES

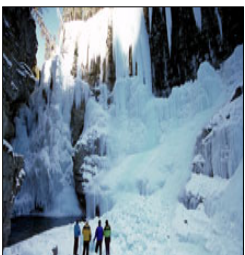


Join Holiday on Horseback with your friends and family for a sleigh ride, the perfect “Western Touch” to your winter vacation. Sleigh Rides are available every hour on the hour, 7 days a week from 10:00 am to 8:00 pm weather and snow conditions permitting. Rides are approximately 45 minutes.

Romantic private sleigh rides are available daily for just the 2 of you.

Prices range from \$23.00 per person for group rides and \$142.00 per couple for private rides.

### JOHNSTON CANYON ICEWALKS



Hike on steel walkways built into the canyon walls that give an airy view of the canyon below. Travel through prime wildlife habitat on your way to the trail head and learn the clues to how Johnston Canyon was formed. This popular walk will lead you past the lower falls and to the breathtaking upper icefalls.

Tours depart daily at 8:15 am and 1:15 pm.

Adults \$59.00 Children (8-12) \$30.00.

### SNOWMOBILING



Experience the excitement of driving a Ski-doo through the mountains. You will be guided through spectacular scenery and given the opportunity to play in the powder. Each guest will operate a Ski-doo as you follow trails through the forest to a trappers cabin for a delicious snack. The journey will take you along winding trails along the edge of a valley to areas above tree line.

Prices range from \$169.00 - \$209.00 per person.

### SNOWSHOEING



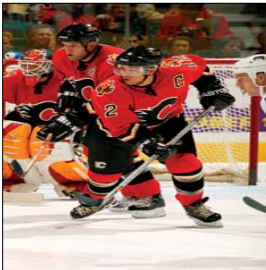
Snowshoe to secluded Vista Lake nestled beneath Storm Mountain. Travel through the regrowth of the 1968 Vermillion Pass Fire and learn about recent fire and their importance to the environment. At Vista Lake warm up with some hot chocolate and marshmallows or try an outdoor team challenge. Trip departs daily at 1:15 pm. Prices are \$59.00 for adults and \$30.00 for children 8-12.

### SIGHTSEEING



Build a connection to our World Heritage Site as you visit Banff's landmarks and view its wildlife in their natural winter habitat. Or view the powerful landscape first hand on your way to Lake Louise and Bow Lake. Learn about our mountaineering history and how a tragic accident at Lake Louise shaped Canadian Mountain Culture. Tours depart daily at 8:45 am (Banff) and 1:15 (Lake Louise). Prices range from \$49.00 to \$59.00 per person.

### CALGARY FLAMES HOCKEY



Feel the excitement of an NHL ice hockey game. Cheer on the Western Conference Champion Calgary Flames and get ready for some fast paced, action packed hockey. This is the highest level of hockey in the world and a national pastime in Canada. Games are at the famed Calgary Saddledome and are suitable for the whole family. Prices range from \$90.00 - \$150.00 per person.

### HELI SKIING/BOARDING



Imagine finding yourself on the highest mountain peak, looking down an untouched, untracked powder slope stretching infinitely before your eyes. Imagine an endless run from the open alpine glacier down through an enchanted forest to the valley bottom where a helicopter waits to take you back up to do it all again. Must be a strong intermediate skier. Prices are from \$700 - \$1000 per person.

**Please see the Concierge for more information and for all activity reservations.**

Please note that prices are subject to change.